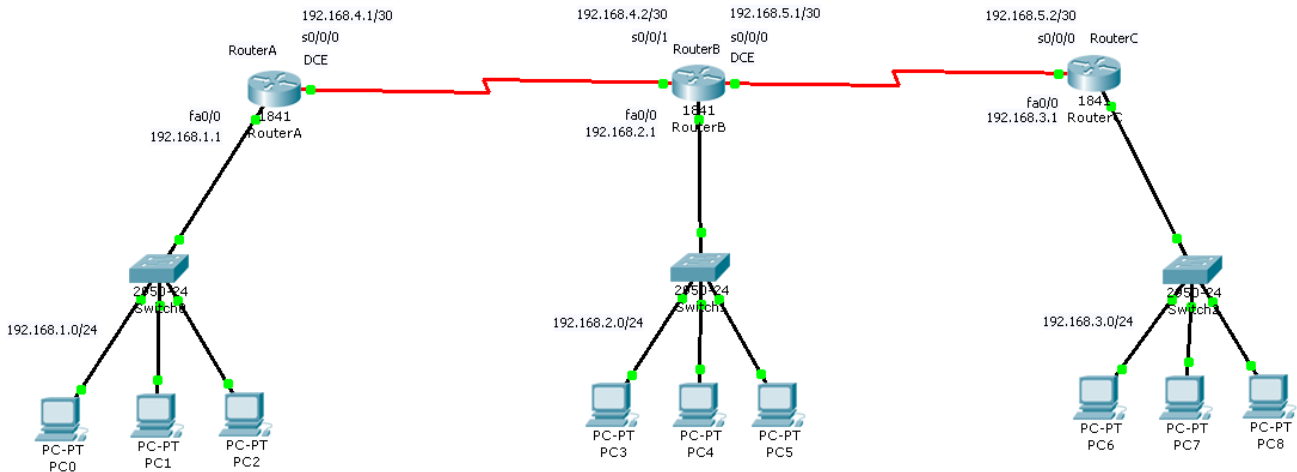


EIGRP Yapılandırma - 3 Adet Routerlı Bağlantı

www.andabilgi.com

www.arslanacar.com



RouterA

```
Router>en
Router#conf

Router(config)#hostname RouterA

RouterA(config)#enable password RouterSifre

RouterA(config)#line con 0
RouterA(config-line)#password ConsoleSifre
RouterA(config-line)#login

RouterA(config)#line vty 0 15
RouterA(config-line)#login
RouterA(config-line)#enable password SanalSifre

RouterA(config)#service password-encryption

RouterA(config)#banner motd !
Hosgeldiniz ROUTER A
!

RouterA(config)#no ip domain-lookup

RouterA(config)#int s0/0/0
RouterA(config-if)#ip address 192.168.4.1 255.255.255.252
RouterA(config-if)#no shut
RouterA(config-if)#clock rate 64000

RouterA(config)#int fa0/0
RouterA(config-if)#ip address 192.168.1.1 255.255.255.0
RouterA(config-if)#no shut

RouterA(config)#ip dhcp pool ipHavuzuA
RouterA(dhcp-config)#network 192.168.1.0 255.255.255.0
RouterA(dhcp-config)#default-router 192.168.1.1
RouterA(dhcp-config)#dns-server 8.8.8.8
RouterA(dhcp-config)#lease 1 5 5

RouterA(config)#router eigrp 13
RouterA(config-router)#network 192.168.4.0 0.0.0.3
RouterA(config-router)#network 192.168.1.0
RouterA(config-router)#no auto-summary
```

RouterB

```
Router>en
Router#conf

Router(config)#hostname RouterB

RouterB(config)#enable password RouterSifre

RouterB(config)#line con 0
RouterB(config-line)#password ConsoleSifre
RouterB(config-line)#login

RouterB(config)#line vty 0 15
RouterB(config-line)#login
RouterB(config-line)#enable password SanalSifre

RouterB(config)#service password-encryption

RouterB(config)#banner motd !
Hosgeldiniz ROUTER B
!

RouterB(config)#no ip domain-lookup

RouterB(config)#int s0/0/0
RouterB(config-if)#ip address 192.168.5.1 255.255.255.252
RouterB(config-if)#no shut
RouterB(config-if)#clock rate 64000

RouterB(config)#int s0/0/1
RouterB(config-if)#ip address 192.168.4.2 255.255.255.252
RouterB(config-if)#no shut

RouterB(config)#int fa0/0
RouterB(config-if)#ip address 192.168.2.1 255.255.255.0
RouterB(config-if)#no shut

RouterB(config)#ip dhcp pool ipHavuzuB
RouterB(dhcp-config)#network 192.168.2.0 255.255.255.0
RouterB(dhcp-config)#default-router 192.168.2.1
RouterB(dhcp-config)#dns-server 8.8.8.8
RouterB(dhcp-config)#lease 1 5 5

RouterB(config)#router eigrp 13
RouterB(config-router)#network 192.168.4.0 0.0.0.3
RouterB(config-router)#network 192.168.5.0 0.0.0.3
RouterB(config-router)#network 192.168.2.0
RouterB(config-router)#no auto-summary
```

RouterC

```
Router>en
Router#conf

Router(config)#hostname RouterC

RouterC(config)#enable password RouterSifre

RouterC(config)#line con 0
RouterC(config-line)#password ConsoleSifre
RouterC(config-line)#login

RouterC(config)#line vty 0 15
RouterC(config-line)#login
RouterC(config-line)#enable password SanalSifre

RouterC(config)#service password-encryption

RouterC(config)#banner motd !
Hosgeldiniz ROUTER C
!

RouterC(config)#no ip domain-lookup

RouterC(config)#int s0/0/0
RouterC(config-if)#ip address 192.168.5.2 255.255.255.252
RouterC(config-if)#no shut

RouterC(config)#int fa0/0
RouterC(config-if)#ip address 192.168.3.1 255.255.255.0
RouterC(config-if)#no shut

RouterC(config)#ip dhcp pool ipHavuzuC
RouterC(dhcp-config)#network 192.168.3.0 255.255.255.0
RouterC(dhcp-config)#default-router 192.168.3.1
RouterC(dhcp-config)#dns-server 8.8.8.8
RouterC(dhcp-config)#lease 1 5 5

RouterC(config)#router eigrp 13
RouterC(config-router)#network 192.168.5.0 0.0.0.3
RouterC(config-router)#network 192.168.3.0
RouterC(config-router)#no auto-summary
```